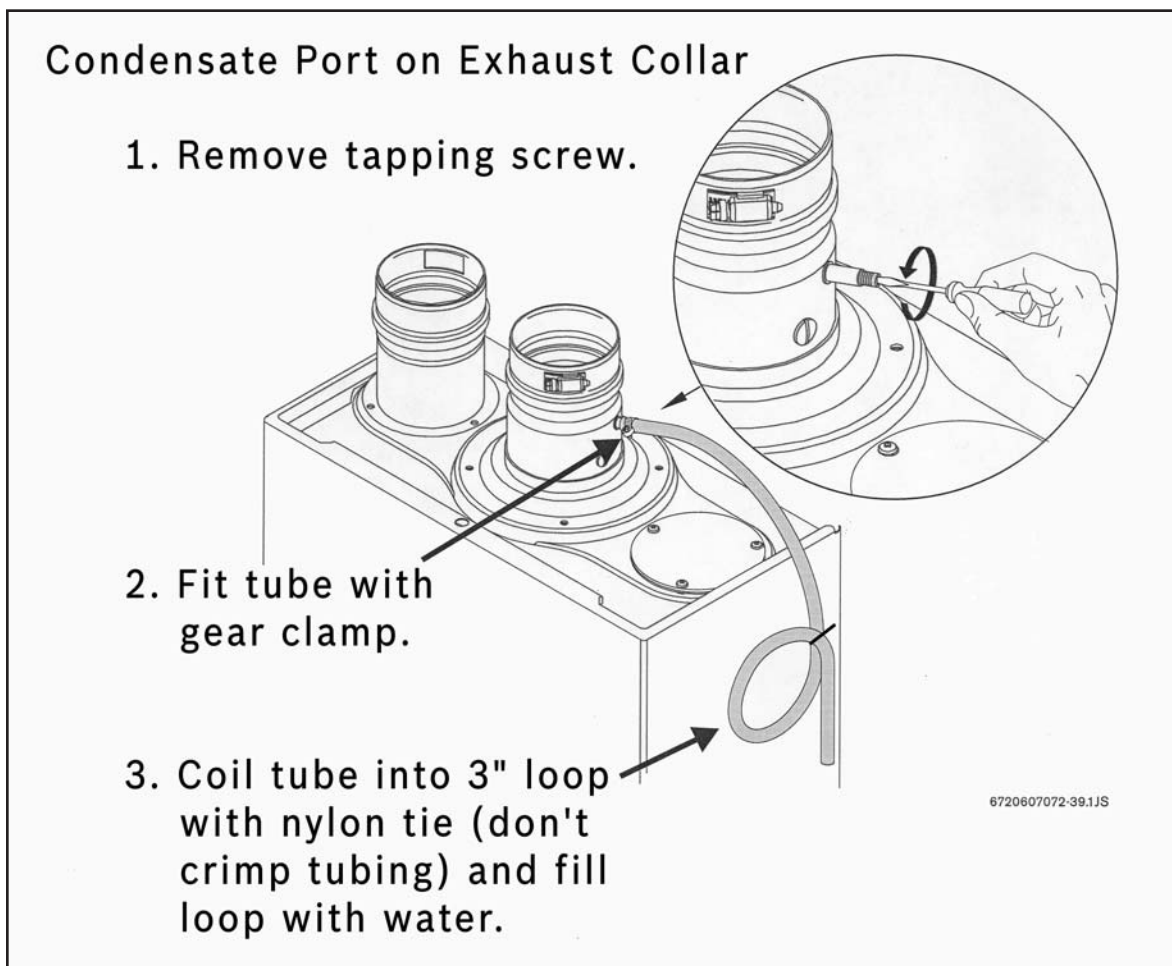


INSTALLATION INSTRUCTIONS

For External Condensate Drain Tube Kit

Condensate Drain Tube Kit is **REQUIRED** for all types of installation. **Warranty is void if not installed.**

1. The condensate drain tube kit must be used for all installation types.
2. When installing the condensate drain tube kit at the exhaust collar (see diagram below), be sure to form a trap by means of a 3" (76.3 mm) loop filled with water. The supplied tube is 3/8" inside diameter (ID) high temperature silicone and must be attached to the condensate tapping on the exhaust collar with its supplied gear clamp (first remove screw at tapping point).
3. If the supplied tube length needs to be increased, connect vinyl-type tubing after the supplied tube.
4. The condensate must be disposed of according to local regulations.



If you have questions regarding installation of the condensate drain tube kit, please contact our Technical Support Department at the number listed on the back of the water heater manual.